

To our customers,

---

## Old Company Name in Catalogs and Other Documents

---

On April 1<sup>st</sup>, 2010, NEC Electronics Corporation merged with Renesas Technology Corporation, and Renesas Electronics Corporation took over all the business of both companies. Therefore, although the old company name remains in this document, it is a valid Renesas Electronics document. We appreciate your understanding.

Renesas Electronics website: <http://www.renesas.com>

April 1<sup>st</sup>, 2010  
Renesas Electronics Corporation

Issued by: Renesas Electronics Corporation (<http://www.renesas.com>)

Send any inquiries to <http://www.renesas.com/inquiry>.

## Notice

1. All information included in this document is current as of the date this document is issued. Such information, however, is subject to change without any prior notice. Before purchasing or using any Renesas Electronics products listed herein, please confirm the latest product information with a Renesas Electronics sales office. Also, please pay regular and careful attention to additional and different information to be disclosed by Renesas Electronics such as that disclosed through our website.
2. Renesas Electronics does not assume any liability for infringement of patents, copyrights, or other intellectual property rights of third parties by or arising from the use of Renesas Electronics products or technical information described in this document. No license, express, implied or otherwise, is granted hereby under any patents, copyrights or other intellectual property rights of Renesas Electronics or others.
3. You should not alter, modify, copy, or otherwise misappropriate any Renesas Electronics product, whether in whole or in part.
4. Descriptions of circuits, software and other related information in this document are provided only to illustrate the operation of semiconductor products and application examples. You are fully responsible for the incorporation of these circuits, software, and information in the design of your equipment. Renesas Electronics assumes no responsibility for any losses incurred by you or third parties arising from the use of these circuits, software, or information.
5. When exporting the products or technology described in this document, you should comply with the applicable export control laws and regulations and follow the procedures required by such laws and regulations. You should not use Renesas Electronics products or the technology described in this document for any purpose relating to military applications or use by the military, including but not limited to the development of weapons of mass destruction. Renesas Electronics products and technology may not be used for or incorporated into any products or systems whose manufacture, use, or sale is prohibited under any applicable domestic or foreign laws or regulations.
6. Renesas Electronics has used reasonable care in preparing the information included in this document, but Renesas Electronics does not warrant that such information is error free. Renesas Electronics assumes no liability whatsoever for any damages incurred by you resulting from errors in or omissions from the information included herein.
7. Renesas Electronics products are classified according to the following three quality grades: “Standard”, “High Quality”, and “Specific”. The recommended applications for each Renesas Electronics product depends on the product’s quality grade, as indicated below. You must check the quality grade of each Renesas Electronics product before using it in a particular application. You may not use any Renesas Electronics product for any application categorized as “Specific” without the prior written consent of Renesas Electronics. Further, you may not use any Renesas Electronics product for any application for which it is not intended without the prior written consent of Renesas Electronics. Renesas Electronics shall not be in any way liable for any damages or losses incurred by you or third parties arising from the use of any Renesas Electronics product for an application categorized as “Specific” or for which the product is not intended where you have failed to obtain the prior written consent of Renesas Electronics. The quality grade of each Renesas Electronics product is “Standard” unless otherwise expressly specified in a Renesas Electronics data sheets or data books, etc.
  - “Standard”: Computers; office equipment; communications equipment; test and measurement equipment; audio and visual equipment; home electronic appliances; machine tools; personal electronic equipment; and industrial robots.
  - “High Quality”: Transportation equipment (automobiles, trains, ships, etc.); traffic control systems; anti-disaster systems; anti-crime systems; safety equipment; and medical equipment not specifically designed for life support.
  - “Specific”: Aircraft; aerospace equipment; submersible repeaters; nuclear reactor control systems; medical equipment or systems for life support (e.g. artificial life support devices or systems), surgical implantations, or healthcare intervention (e.g. excision, etc.), and any other applications or purposes that pose a direct threat to human life.
8. You should use the Renesas Electronics products described in this document within the range specified by Renesas Electronics, especially with respect to the maximum rating, operating supply voltage range, movement power voltage range, heat radiation characteristics, installation and other product characteristics. Renesas Electronics shall have no liability for malfunctions or damages arising out of the use of Renesas Electronics products beyond such specified ranges.
9. Although Renesas Electronics endeavors to improve the quality and reliability of its products, semiconductor products have specific characteristics such as the occurrence of failure at a certain rate and malfunctions under certain use conditions. Further, Renesas Electronics products are not subject to radiation resistance design. Please be sure to implement safety measures to guard them against the possibility of physical injury, and injury or damage caused by fire in the event of the failure of a Renesas Electronics product, such as safety design for hardware and software including but not limited to redundancy, fire control and malfunction prevention, appropriate treatment for aging degradation or any other appropriate measures. Because the evaluation of microcomputer software alone is very difficult, please evaluate the safety of the final products or system manufactured by you.
10. Please contact a Renesas Electronics sales office for details as to environmental matters such as the environmental compatibility of each Renesas Electronics product. Please use Renesas Electronics products in compliance with all applicable laws and regulations that regulate the inclusion or use of controlled substances, including without limitation, the EU RoHS Directive. Renesas Electronics assumes no liability for damages or losses occurring as a result of your noncompliance with applicable laws and regulations.
11. This document may not be reproduced or duplicated, in any form, in whole or in part, without prior written consent of Renesas Electronics.
12. Please contact a Renesas Electronics sales office if you have any questions regarding the information contained in this document or Renesas Electronics products, or if you have any other inquiries.

(Note 1) “Renesas Electronics” as used in this document means Renesas Electronics Corporation and also includes its majority-owned subsidiaries.

(Note 2) “Renesas Electronics product(s)” means any product developed or manufactured by or for Renesas Electronics.

# Renesas Starter Kit for M16C/6C

USB Sample Code User's Manual

RENEASAS SINGLE-CHIP MICROCOMPUTER  
M16C FAMILY

---

# Table of Contents

<b>Table of Contents</b> .....	ii
Chapter 1. Preface .....	3
Chapter 2. Introduction.....	4
Chapter 3. Development Environment.....	5
3.1. Sample Code Configuration .....	5
3.2. Target Sample Code Options .....	5
3.3. Host Application Software .....	5
Chapter 4. USB Stack (Target).....	6
4.1. Hardware Abstraction Layer .....	6
4.2. USBCore .....	7
4.3. Human Interface Device Class.....	8
4.4. Communication Device Class .....	9
4.5. Mass Storage Class .....	10
Chapter 5. Applications .....	11
5.1. Introduction to Applications .....	11
5.2. Human Interface Device Application .....	11
5.3. Communications Device Class Application .....	13
5.4. Mass Storage Class Demonstration .....	16
5.5. LibUSB .....	17
Chapter 6. Additional Information.....	20

# Chapter 1. Preface

## Cautions

This document may be, wholly or partially, subject to change without notice.

All rights reserved. No one is permitted to reproduce or duplicate, in any form, a part or this entire document without the written permission of Renesas Technology Europe Limited.

## Trademarks

All brand or product names used in this manual are trademarks or registered trademarks of their respective companies or organisations.

## Copyright

© Renesas Technology Europe Ltd. 2009. All rights reserved.

© Renesas Technology Corporation. 2009. All rights reserved.

© Renesas Solutions Corporation. 2009. All rights reserved.

Website: <http://www.renesas.com/>

## Glossary

ADC	Analog to Digital Converter
CDC	Communication Device Class
HAL	Hardware Abstraction Layer
HID	Human Interface Device
LCD	Liquid Crystal Display
LED	Light Emitting Diode
MSC	Mass Storage Class
RSK	Renesas Starter Kit
USB	Universal Serial Bus

## Chapter 2.Introduction

The RSK USB sample code provides a basis for a developer to add USB device functionality to a system. It includes sample applications for the three most common USB Device classes\*:-

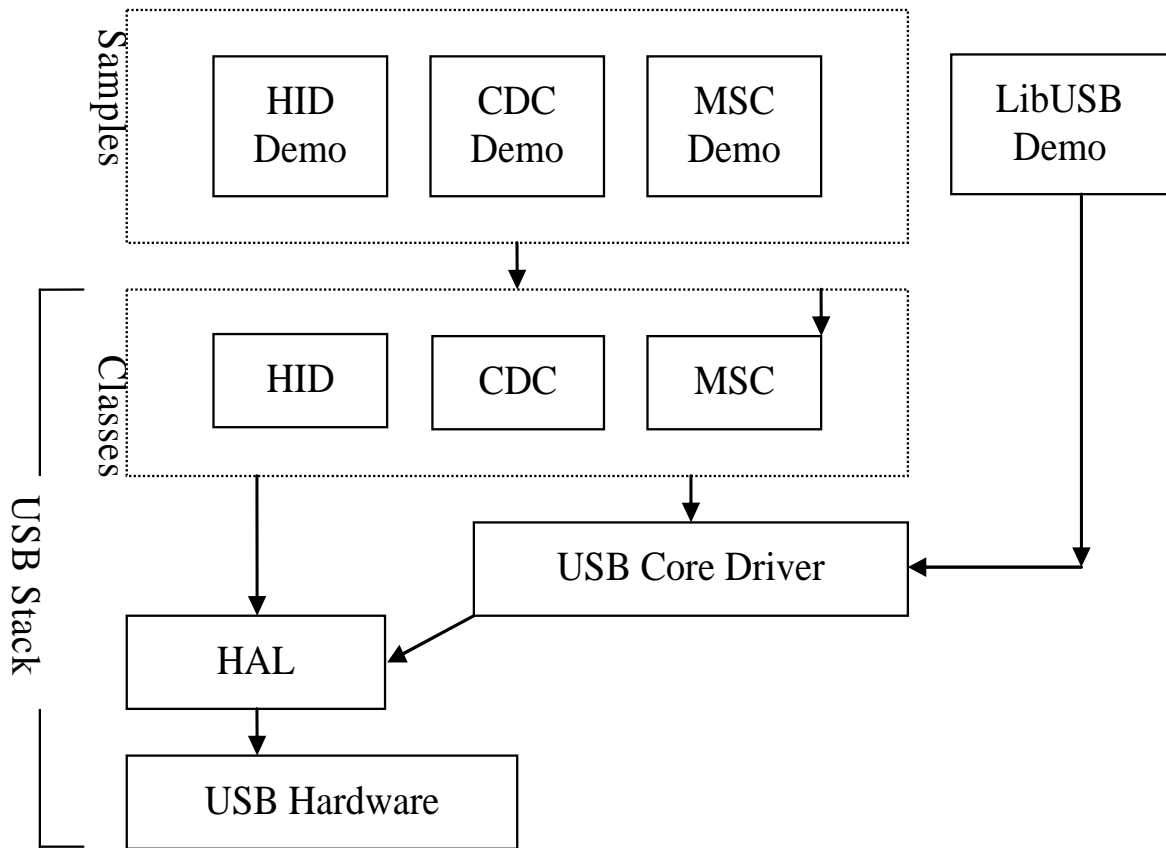
- Human Interface Device (HID)
- Communication Device Class - Abstract Control Model (CDC-ACM)
- Mass Storage Class (MSC)

In addition to the three defined USB classes a LibUSB sample is included. [LibUSB](#) is an open source project with the aim of providing a library that a user application can utilise to access a USB device regardless of operating system. A sample using a Microsoft Windows XP host is provided.

The embedded software is available as source written in ANSI C and does not require an operating system.

The host applications software is also available as source written for MS Windows using VisualC++.

This manual describes the USB sample code. The Quick Start Guide and Tutorial Manual provide details of the software installation and debugging environment.



**Figure 1 - Embedded SW, including Layers of USB Stack**

\* See specific sections for details. Tested with a USB Host PC running MS Windows XP SP2. HID and LibUSB samples both include a PC Application.

---

## Chapter 3. Development Environment

### 3.1. Sample Code Configuration

The Sample code is provided as a project generator with the RSK. To create the sample code project follow the instructions in the RSK Quick Start Guide.

When created the sample code will contain the source for both the Target project and a Host project if applicable, including any configuration driver files.

### 3.2. Target Sample Code Options

When developing USB software it is useful to be able to get debug information out at runtime without stopping code from running such as when stepping in a debugger. All modules of the USB Stack software include debug messages that can be utilised in a system that supports printf. The sample applications all support printf and the output is viewable via the serial port of the RSK. To view the serial output the following settings are required:

Baud: 57600. Data: 8 Bit. Parity: None. Stop Bits: 2. Flow: None.

The level of debug message can be set using the #define VERBOSE\_LEVEL. This is described in the file usb\_common.h in the USBStack directory. Note that a high level of debug messages can significantly slow down the system.

### 3.3. Host Application Software

To build the Microsoft Visual C++ Applications you will need to have the appropriate Windows Software Development Kit (SDK) and the Windows Driver Development Kit (DDK) installed. These kits provide access to the library functions to access USB devices and are available directly from Microsoft.

We have provided the links to the current locations for XP based downloads below however we cannot guarantee the suitability or accuracy of these links. Both must be installed to be able to build the application, we suggest installing the SDK first.

[www.microsoft.com/downloads](http://www.microsoft.com/downloads)

[Windows SDK](#)

[Windows DDK](#)

The LibUSB sample requires files provided by LibUSB-Win32. See section 5.5 LibUSB for details.

---

# Chapter 4.USB Stack (Target)

The USB software is implemented in the form of a USB stack comprising of three layers.

At the top of the stack are the USB Device Classes consisting of HID, CDC and MSC which are all described later.

In the middle is a core layer (USBCore) that handles standard device requests. At the bottom is a hardware abstraction layer (HAL) that provides a hardware independent API for the upper layers.

This modular design means this software can be still be used even if developing a proprietary USB interface. For example a proprietary module could be implemented by calling functions directly exposed by both the USBHAL API and USBCore API.

## 4.1.Hardware Abstraction Layer

The HAL is a hardware specific layer that provides a non-hardware specific API. The HAL supports the following transfer modes:

- Control (Setup, Data IN/OUT, Status)
- Bulk (IN and OUT)
- Interrupt (IN)

Some HAL implementations may not be able to support all these modes but the M16C/6C implementation does.

The way the HAL handles USB Suspend and Resume signalling is controlled by a #define in file USB\_HAL.h. If 'USB\_SUSPEND\_LOW\_POWER' is defined then the HAL will automatically put the MCU in a low power mode when the USB bus is suspended and restore it to a normal power mode when a USB Resume occurs. This behaviour is required if the device is USB bus powered as the USB specification limits the suspended current to 500uA. The low power mode chosen is 'Wait Mode' and the PLL is also disabled. This software makes the assumption that the PLL is being used as the CPU Clock.

Here is a list of the functions that make up the USBHAL API.

Name	Description
USBHAL_Init	Initialise the HAL. Register callback functions. If using the USB Core layer then this is done automatically.
USBHAL_Config_Get	Get the current HAL configuration.
USBHAL_Config_Set	Set the current HAL configuration.
USBHAL_Control_ACK	Generate an ACK on the Control IN pipe. (Used following a setup packet)
USBHAL_Control_IN	Send data on the Control IN pipe. (Used following a setup packet)
USBHAL_Control_OUT	Receive data on the Control OUT pipe. (Used following a setup packet)
USBHAL_Bulk_IN	Send data on the Bulk IN pipe.
USBHAL_Bulk_OUT	Receive data on the Control OUT pipe.
USBHAL_Interrupt_IN	Send data on the Control IN pipe.
USBHAL_Reset	Reset this module. (Following an error).
USBHAL_Control_Stall	Stall the control pipe. (Used following a setup packet)
USBHAL_Bulk_IN_Stall	Stall the Bulk IN pipe.
USBHAL_Bulk_OUT_Stall	Stall the Bulk OUT pipe.
USBHAL_Interrupt_IN_Stall	Stall the Interrupt IN pipe.
USBHALInterruptHandler	The system must be setup so that this gets called when any USB Interrupt occurs.

The HAL module consists of the following files:-

- usb\_hal.c
- usb\_hal.h.



---

usb\_common.h

## 4.2.USBCore

The USBCore layer handles standard USB requests common to all USB devices during the enumeration stage. This means that a developer can concentrate on any class or vendor specific implementation. The USBCore requires initialising with the descriptors specific to the device being implemented. It uses the USBHAL, which it initialises, to access the particular HW.

The following Get\_Descriptor requests are handled:

- Device
- Configuration
- String
  - Language ID (Only a single language ID is supported and this is currently English)
  - Manufacturer
  - Product
  - Serial Number

The USB CDC API consists of a single function called 'USBCORE\_Init'. This initialises the USBCore and the HAL. In addition to passing device descriptors to this function it also requires call back functions for the following conditions:

- A Setup packet has been received that this layer can't handle. This enables a higher layer to handle class or vendor specific requests.
- A Control Data Out has completed following a setup packet that is being handled by the layer above.
- The USB cable has been connected or disconnected.
- An unhandled error has occurred.

The HAL module consists of the following files:-

usb\_core.c

usb\_core.h.

usb\_common.h

---

## 4.3.Human Interface Device Class

The HID class as the name suggests is commonly used for things like keyboards, mice and joysticks where a human's action is causing the need for communication. However this does not need to be the case. The HID class is suitable for any device where the communication can be achieved by sending data in 'reports' of a predefined size where the data transfer rate is not critical.

The HID class has been supported by Microsoft Windows 98 onwards. Support is both at kernel level and user level. When a HID type device is plugged into a Windows PC it will be automatically recognised and Windows will load its own drivers for it, so there is no need to develop a custom Windows driver or even a Windows 'inf' file.

This implementation of the HID class supports a single IN report and a single OUT report. Both Interrupt IN and Control IN (via Get\_Report) transfers are supported for sending a report to the host. Reports from the host must use Control OUT (via Set\_Report).

Here are the functions that make up the USBHID API.

Name	Description
USBHID_Init	Initialise the HID module. Register a callback functions to be called when a report is received from the host. Provide the initial contents of a report to send to the host. Initialises the Core and HAL layers.
USBHID_ReportIN	Send a report to the host using Interrupt IN transfer.

The HID module consists of the following files:-

usb\_hid.c

usb\_hid.h.

usb\_descriptors.c

usb\_descriptors.h

usb\_common.h

---

## 4.4. Communication Device Class

The CDC ACM allows a host to see a device as a standard serial (COM) port. This is particularly useful when working with legacy applications that use serial communications. Bulk IN and Bulk OUT transfers are used for all non-setup data.

The CDC module utilises the USBCore layer for the processing of all standard requests. In addition it processes the following class requests.

GET\_LINE\_CODING

SET\_LINE\_CODING (As required by MS HyperTerminal)

SET\_CONTROL\_LINE\_STATE

The CDC class is supported by MS Windows so there is no need to develop a custom Windows kernel driver. However a custom 'inf' file is required, the sample CDC application includes such a file. When a CDC ACM device is plugged into a Windows PC an additional (virtual) COM port will become available that applications can use just like a standard COM port.

Here are the functions that make up the USBCDC API.

Name	Description
USBCDC_Init	Initialise the CDC module. This also initialises the Core and HAL layers.
USBCDC_IsConnected	Returns the connected status of the device.
USBCDC_WriteString	A blocking function that sends a string to the host.
USBCDC_PutChar	A blocking function that sends a character to the host.
USBCDC_GetChar	A blocking function that gets a character from the host.
USBCDC_Write	A blocking function that sends a supplied data buffer to the host.
USBCDC_Write_Async	Starts an asynchronous write of a data buffer to the host. A call back is used to signal when the operation has completed.
USBCDC_Read	A blocking function that reads from the host into a supplied data buffer.
USBCDC_Read_Async	Starts an asynchronous read from the host into a data buffer. A call back is used to signal when the operation has completed.
USBCDC_Cancel	Cancel any asynchronous operations that are pending.

The CDC module consists of the following files:-

usb\_cdc.c

usb\_cdc.h

usb\_descriptors.c

usb\_descriptors.h

usb\_common.h

---

## 4.5. Mass Storage Class

The MSC class has become a very popular way for devices, such as cameras and USB Pens, to share data with PCs. The reason for the success is that when the device is plugged in to a host PC it appears to the PC as just another drive and therefore users can use familiar applications such as Windows Explorer to access the data. From Windows 2000 onwards the MSC class has been supported with no need for custom drivers or 'inf' files.

Bulk IN and Bulk OUT transfers are used for all non-setup data.

The MSC module utilises the USBCore layer for the processing of all standard requests. In addition it processes the following class requests.

BULK\_ONLY\_MASS\_STORAGE\_RESET

GET\_MAX\_LUN

In addition to supporting the standard USB protocol a MSC device must support a set of SCSI commands. All SCSI commands are sent packaged up in a Command Block Wrapper (CBW) within a Bulk OUT transfer. A data stage may follow in either direction and then to complete the SCSI command the device sends a status response in the form of a Command Status Wrapper (CSW). The following SCSI commands are supported:

INQUIRY

READ\_CAPACITY10

READ10

REQUEST\_SENSE

TEST\_UNIT\_READY

WRITE10

VERIFY10

PREVENT\_ALLOW\_MEDIUM\_REMOVAL (Optional)

MODE\_SENSE6 (Optional, Limited support)

The USBMSC API consists of a single function called 'USBMSC\_Init'. This initialises the MSC module and also the USBCore and HAL layers.

This implementation of the MSC class directly accesses a simple RAM Disk block driver that uses 24KB of the RSK's RAM. i.e. There is no separation between MSC class and MSC application. Hence when using a different memory this will need to be changed to access that rather than the sample RAM Disk.

The MSC module consists of the following files:-

usb\_msc.c

usb\_msc.h

usb\_msc\_scsi.c

usb\_msc\_scsi.h

ram\_disk.c

ram\_disk.h

usb\_descriptors.c

usb\_descriptors.h

usb\_common.h

---

# Chapter 5.Applications

## 5.1.Introduction to Applications

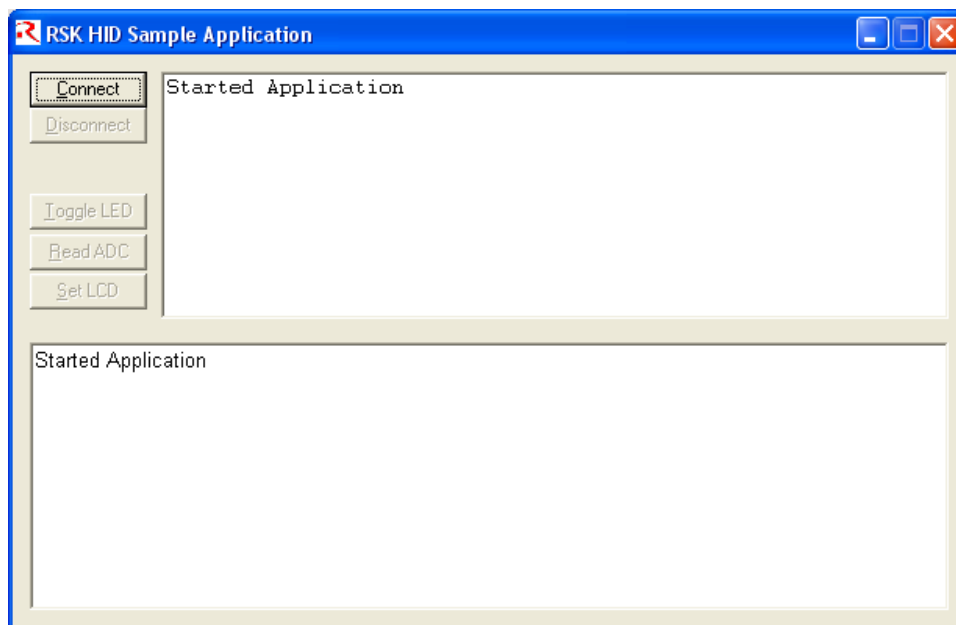
The following sections introduce the sample applications that can be used to demonstrate each of the USB solutions. The HID and LibUSB projects require specially written host applications that are supplied as both executables and as source. The CDC and MSC projects make use of standard Windows applications.

All the applications require that the RSK has been programmed with the appropriate sample code for the application. Details of how to program the RSK have been provided as part of the tutorial with the product. To obtain a digital copy of the manual please visit the Renesas web site at [www.renesas.com/renesas\\_starter\\_kits](http://www.renesas.com/renesas_starter_kits) and select your RSK from the list.

## 5.2.Human Interface Device Application

The HID host sample application is written for a Windows host PC and is called RSK\_HID.

The pre-built executable has been provided with the project generator. Navigate to the release directory under the project and run RSK\_HID.exe. The following window will be displayed:



**Figure 2 - HID host PC application**

Program the RSK with the HID application and run the code. Connect a USB cable between the PC and the RSK. The first time the device is connected to a specific USB port windows will detect the new device and automatically load the intrinsic HID class driver.

When windows has completed the enumeration process you need to make a connection from the application to the target. Click the "Connect" button and you will be asked to confirm the VID and PID of the device you wish to connect with. If you have not altered the firmware on the RSK to use your own VID and PID then the defaults will be correct. When a connection is successfully made information about the device will be displayed and the rest of the buttons will be enabled.

The "Toggle LED" button enables a LED on the RSK to be toggled on and off.

The "Read ADC" button will command the RSK to read its ADC and return the value back to the host where it will be displayed.

The "Set LCD" button allows the text of the LCD on the RSK to be changed.

To demonstrate that the RSK can also instigate communications you can press a switch on the RSK and this will be indicated back to the host resulting in a message being displayed on the dialog.

This demonstrates that Input and Output HID reports are being sent successfully between the RSK and the PC. The format of the reports is as follows:

---

Input Report:

Byte 1

Bit 0 = LED status.

Bit 1 = ADC value valid indicator.

Bit 2 = Switch pressed indicator.

Byte 2-5 = 32 bit, little endian ADC Value.

Output Report:

Byte 1

Bit 0 = LED toggle request.

Bit 1 = ADC read request.

Bit 2 = LCD set request.

Byte 2-17 = 16 ASCII Characters for LCD.

An input report is sent whenever a switch on the RSK is pressed or when the host requests a report.

An output report is sent whenever a user clicks on one of the dialog buttons.

The HID application functionality specific to USB consists of the following files:-

Target:

usb\_hid\_app.c

usb\_hid\_app.h

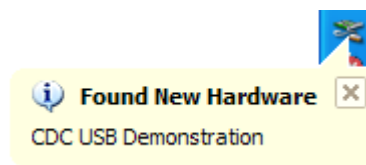
Host Application:

\\PC\RSK\_HID\...

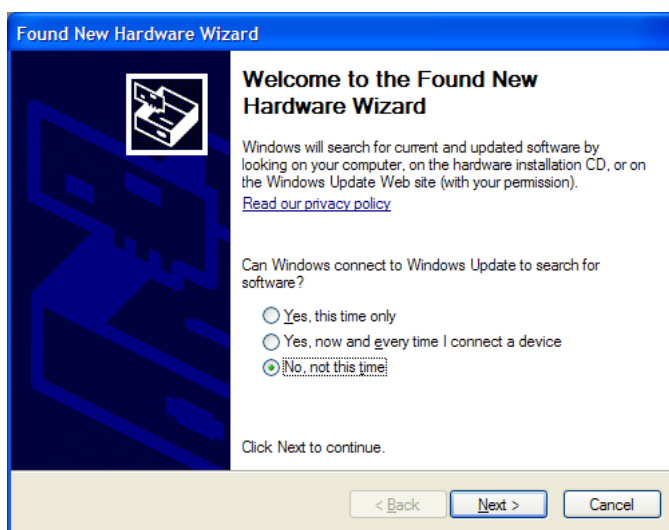
## 5.3. Communications Device Class Application

The CDC sample application demonstrates communication with a Windows PC using a standard terminal program. Windows provides a suitable application called HyperTerminal. Any other serial terminal program will be able to be used if available.

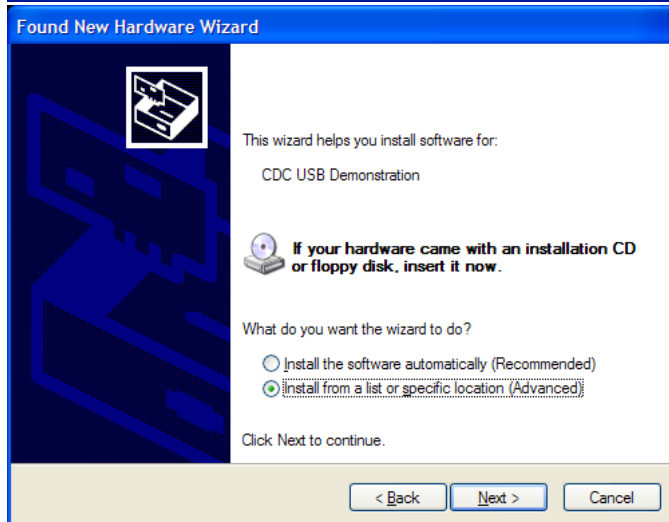
Program the RSK with the CDC application and run the code as described in the RSK tutorial manual. Connect a USB cable between the host PC and the RSK. The first time the device is connected, to a specific USB port, Windows will detect the new device and run the "Found New Hardware Wizard":



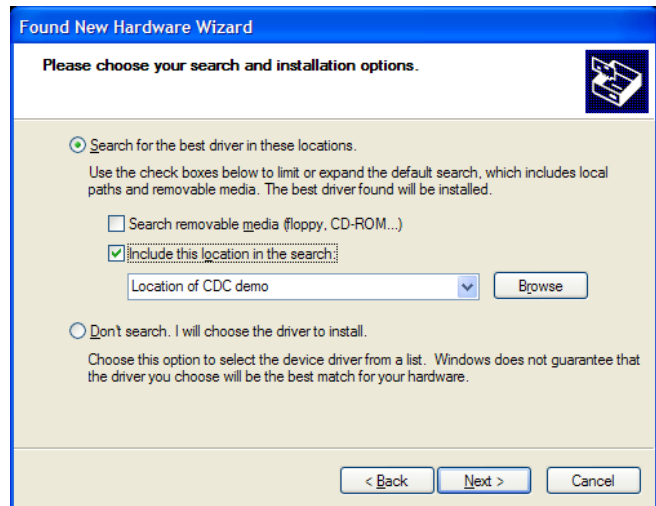
Windows will present the following dialog where you should select "No, not this time".



In the following dialog select "Install from a list or specific location (Advanced)" to allow you to select the correct 'inf' file.



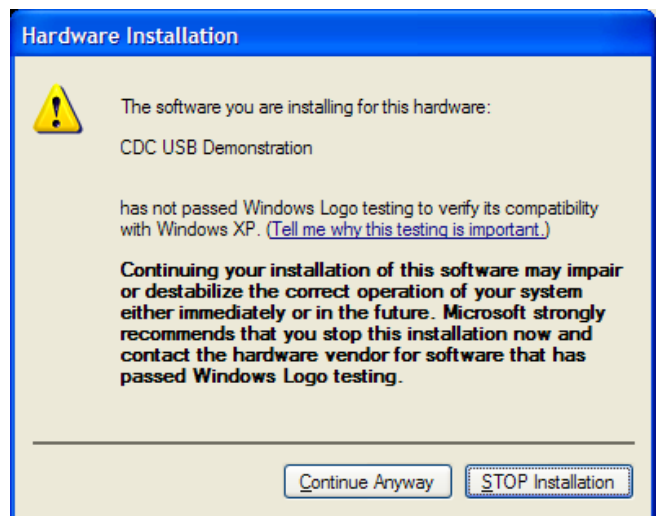
Either type or browse to the location of the CDC project you have generated and built and the host/driver folder.



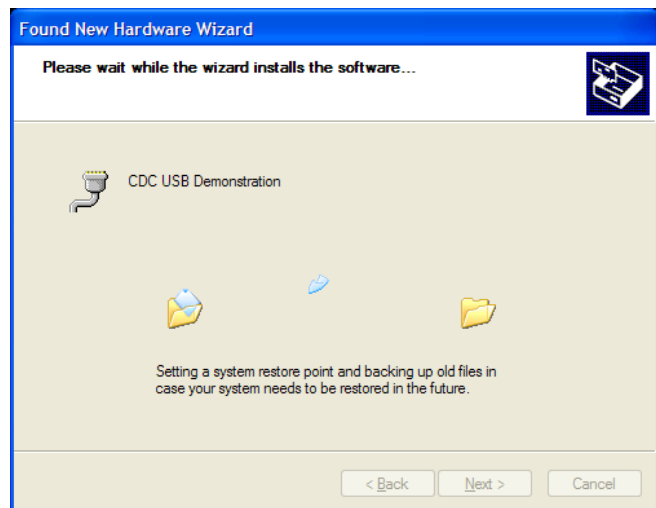
Press next to install the CDC support.

During the installation process a warning may be displayed as shown. Please choose "Continue Anyway" to install the driver.

Please review the Microsoft website for details of the Windows Logo Testing programme.



Windows will then complete the installation of the CDC USB driver.



An additional COM port will become available to Window Applications. To be able to see the port that has been allocated you can open the Windows Device Manager window. To do this, go to the start menu and select run. In the dialog displayed type "devmgmt.msc". This will open the device manager. Expand the group of serial ports and the installed ports will be listed. When the Serial Terminal program connects to this COM port\*, it will receive a repeating message from the RSK saying:

"Renesas USB CDC Sample, Press Switch SW1."

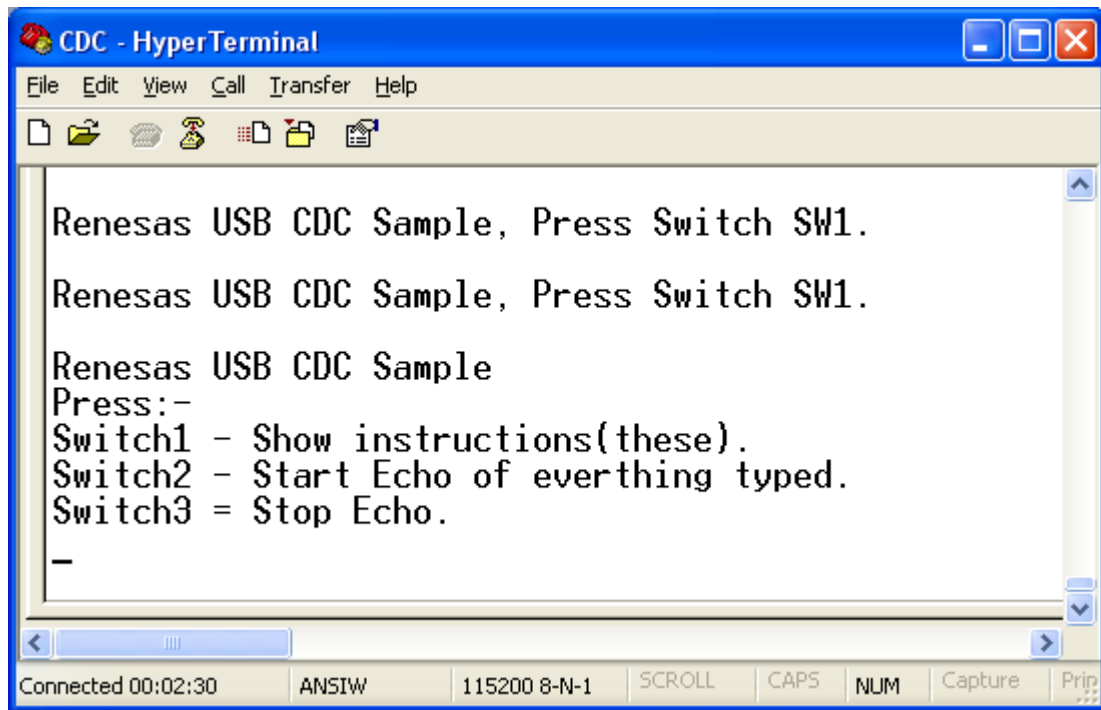
\* Note that the configuration settings for such things as baud rate and parity are irrelevant for this virtual COM port.



---

Pressing SW1 on the RSK will stop this repeating message and will bring up the main menu as shown below.

To demonstrate two-way communication press SW2 to put the RSK into echo mode. In this mode anything typed on the Terminal will be read by the RSK and then echoed back to the terminal. Pressing SW3 cancels this echo mode.



**Figure 3 - Serial communication dialog**

The CDC application functionality specific to USB consists of the following files:-

Target:

usb\_cdc\_app.c

usb\_cdc\_app.h

Host:

\\PC\CDC\_Demo.inf

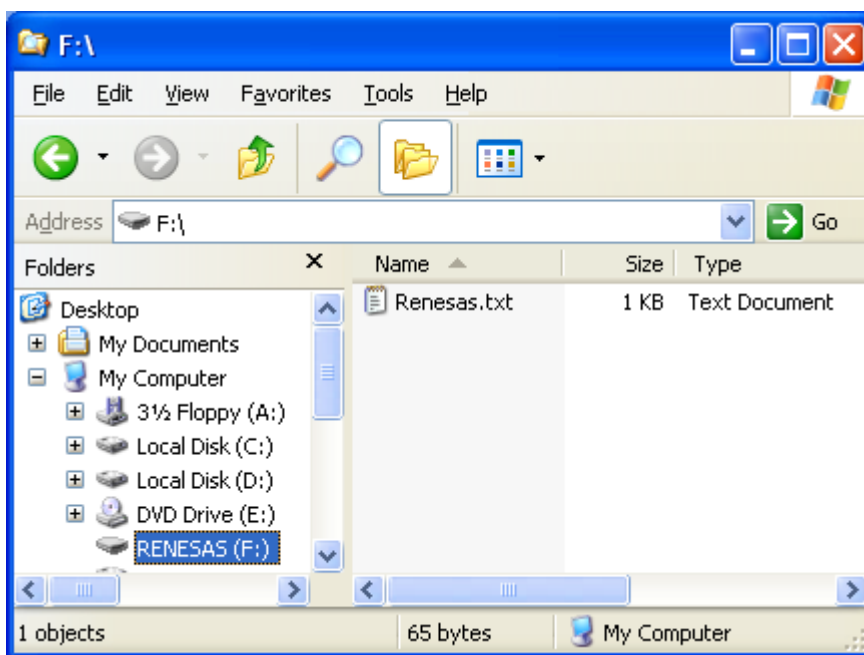
---

## 5.4. Mass Storage Class Demonstration

The MSC sample demonstrates how a host can view a MSC device as an external drive. There is no additional application for this as the MSC support is inherent in Windows XP.

Start the MSC sample application running on the RSK then connect the RSK to a Windows PC via a USB cable.

Using Windows Explorer, or similar, look to find the new drive that Windows will have mounted. This drive is viewing the contents of the sample RAM Disk on the RSK. It has been formatted with a FAT file system and given a volume name of "RENESAS". The available space for data is 4KB. It includes one example file called Renesas.txt which can be opened edited and saved. As you would expect from a normal drive you can also copy files to it, although remember that this is a RAM Disk that will lose its contents when power is removed from the RSK.



**Figure 4 - Windows Explorer showing new Disk Drive mapping**

There is an option in file 'ram\_disk.c' that will prevent the RAM disk from initialising itself with a file system. To select this comment out the #define of FORMAT\_WITH\_FAT\_Example. In this case Windows will report that the drive is not formatted and give the user the option of formatting it.

---

## 5.5.LibUSB

The LibUSB sample application is functionally similar to the previous HID application. The difference is that this sample includes software for a Windows host PC called RSK\_LibUSB. The intention of this open source library is to provide a platform independent operating system interface allowing a device to be used on multiple operating systems with a common code base.

The target RSK code is not dependant upon any external library code however it is written to support the LibUSB functionality.

To use the supplied host SW you will need to first download LibUSB-Win32 which is a port of the LibUSB code for Windows 32 bit environments. This can be obtained from the LibUSB32 web site:

<http://libusb-win32.sourceforge.net/#installation>

Follow the instructions for "Device Driver Installation" (not for the "Filter Driver Installation."), this will lead you to download a file "libusb-win32-device-bin-x.x.x.x.tar.gz". Once unzipped you will have the files you require – there is no installer to run.

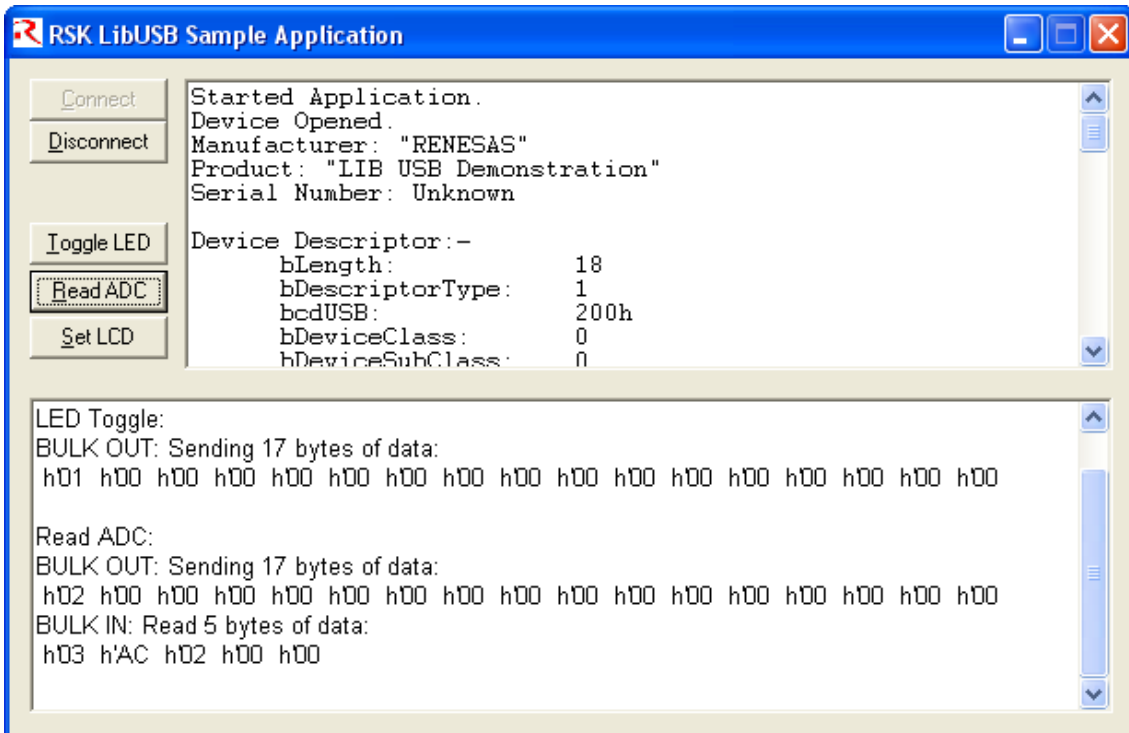
A sample inf file is provided in the LIBUSB sample project you have generated in the host/driver folder. Take a copy of this folder and copy it to the downloaded LibUSB folder "libusb-win32-device-bin-x.x.x.x\bin". (Note: Doing this saves the "Found New Hardware Wizard" having to ask where the driver files are.)

Program the RSK with the LibUSB sample code as described in the RSK tutorial manual. Then run the code. Connect a USB cable between the host PC and the RSK. The first time the device is connected to a specific USB port Windows will detect the new device and ask for the appropriate driver. Using the same procedure as described for the CDC project browse to the downloaded LibUSB folder where you have just copied the example inf file (libusb-win32-device-bin-x.x.x.x\bin). The LibUSB driver should now install.

### Host SW:

This is supplied as a pre-built executable which is located in the release directory under the project and called RSK\_LibUSB.exe. Alternatively you can build the supplied source code. To do this you will need the LibUSB files you downloaded - usb.h, LibUSB.lib and LibUSB0.dll. Update the MS Visual C++ Project settings to point to these files as required.

Run the RSK\_LibUSB.exe and the following Window will be displayed:



**Figure 5 - LibUSB application window**

Note: This is a screen shot after a connection has been made and the 'Set LCD' button and then the 'Read ADC' button have been used.

It should now be possible to make a connection from the application. Click the "Connect" button and you will be asked to confirm the VID and PID of the device you wish to connect with. If you've not altered the firmware on the RSK to use your own VID and PID then the defaults will be correct. When a connection is successfully made information about the device will be displayed and the rest of the buttons will be enabled.

1. The "Toggle LED" button enables a LED on the RSK to be toggled on and off.
2. The "Read ADC" button will command the RSK to read its ADC and return the value back to the host where it will be displayed.
3. The "Set LCD" button allows the text of the LCD on the RSK to be changed.

To demonstrate that the RSK can also instigate communications you can press a switch on the RSK and this will be indicated back to the host resulting in a message being displayed on the dialog.

This demonstrates that data can be sent successfully between the RSK and the PC. A fixed sized format of data has been chosen for all messages, one for OUT and one for IN:

IN Message: (RSK to PC)

Byte 1

Bit 0 = LED status.

Bit 1 = ADC value valid indicator.

Bit 2 = Switch pressed indicator.

---

Byte 2-5 = 32 bit, little endian ADC Value.

OUT Message: (PC to RSK)

Byte 1

Bit 0 = LED toggle request.

Bit 1 = ADC read request.

Bit 2 = LCD set request.

Byte 2-17 = 16 ASCII Characters for LCD.

An IN message is sent whenever a switch on the RSK is pressed, an Interrupt IN transfer is used for this. An IN message is also sent in response to certain OUT messages, a BULK IN transfer is used for this.

An OUT message is sent whenever a user clicks on one of the dialog buttons, a BULK OUT transfer is used for this.

The LibUSB application consists of the following files:-

Target:

libusb\_app.c

libusb\_app.h

usbdescriptors.c

Host:

\\PC\RSK\_LibUSB\...

---

## Chapter 6. Additional Information

For details on how to use High-performance Embedded Workshop (HEW), refer to the HEW manual available on the CD or installed in the Manual Navigator.

For information about the M16C/6C series microcontrollers refer to the *M16C/6C Group Hardware Manual*

For information about the M16C/6C assembly language, refer to the *M16C Series Programming Manual*

For information about the E8a Emulator, please refer to the *E8a Emulator User's Manual*

Further information available for this product can be found on the Renesas website at:

[http://www.renesas.com/renesas\\_starter\\_kits](http://www.renesas.com/renesas_starter_kits)

General information on Renesas Microcontrollers can be found on the following website.

Global: <http://www.renesas.com/>

---

Renesas Starter Kit for M16C/6C  
USB Sample Code User's Manual

Publication Date Rev.1.00 29.SEP.2009

Published by: Renesas Technology Europe Ltd.

Dukes Meadow, Millboard Road, Bourne End Buckinghamshire

SL8 5FH, United Kingdom

---

©2009 Renesas Technology Europe and Renesas Solutions Corp., All Rights Reserved.

# Renesas Starter Kit for M16C/6C USB Sample Code User's Manual



Renesas Electronics Corporation

1753, Shimonumabe, Nakahara-ku, Kawasaki-shi, Kanagawa 211-8668 Japan

REG10J0140-0100