

D

C

B

A

D

C

B

A

6

5

4

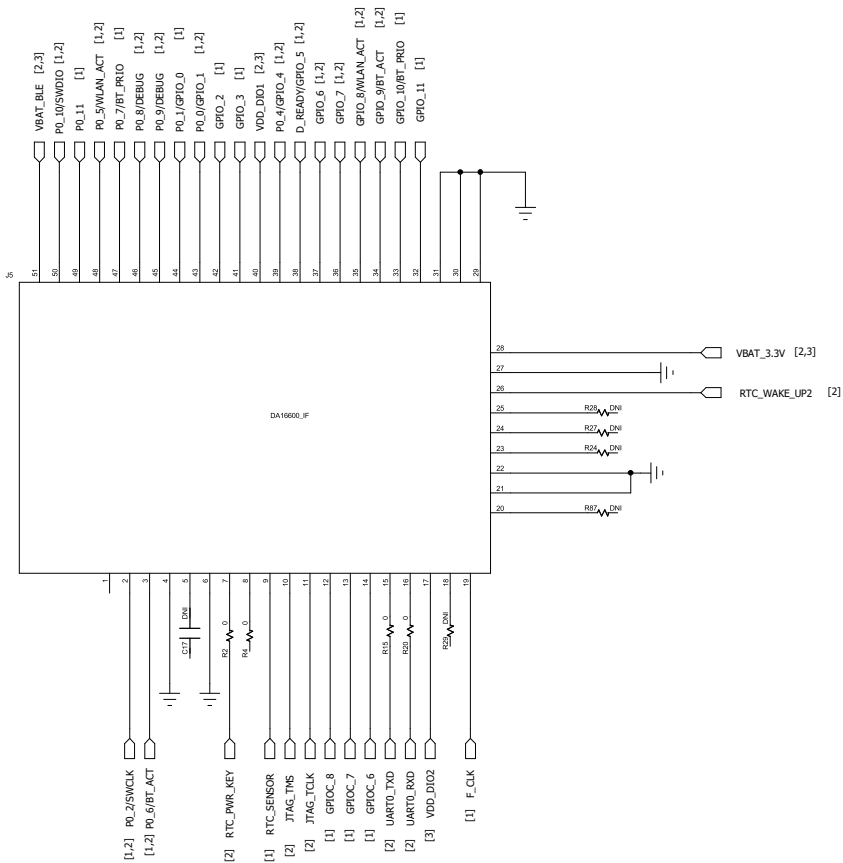
3

2

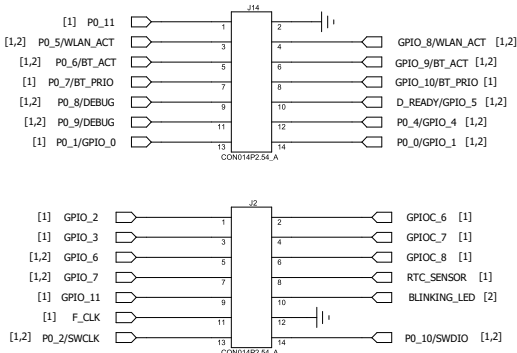
1

| REVISION RECORD | | | |
|-----------------|---------|-----------|-------|
| LTR | ECO NO. | APPROVED: | DATE: |
| | | | |
| | | | |
| | | | |
| | | | |

DA16600_MOD_CONNECTOR



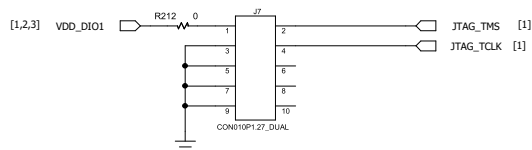
CONNECTOR



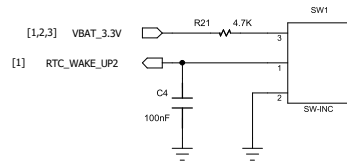
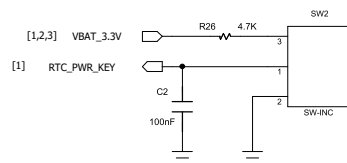
| | | | | | |
|----------------------|--|-------------------|--|-------------------------------|-------|
| DRAWN: Seungsho Shin | | DATED: 11/16/2020 | | DA16600 Module Evaluation Kit | |
| CHECKED: Sungho Kim | | DATED: 11/16/2020 | | CODE: | SIZE: |
| QUALITY CONTROL: | | DATED: | | DRAWING NO: DA16600MOD EVK | |
| RELEASED: Sungho Kim | | DATED: 11/16/2020 | | REV: 4v0 | |
| | | SCALE: | | SHEET: 1 OF 5 | |

| | | | |
|----------|-------|-----------------------------------|-----------------|
| COMPANY: | | Renesas Design Korea Inc. | |
| TITLE: | | DA16600 Module Evaluation Kit | |
| CODE: | SIZE: | DRAWING NO: DA16600MOD EVK | REV: 4v0 |
| SCALE: | | SHEET: 2 OF 5 | |

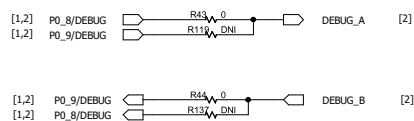
JTAG for DA16200



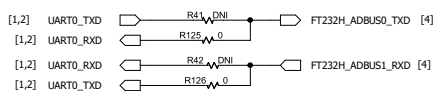
RTC KEY CONTROL



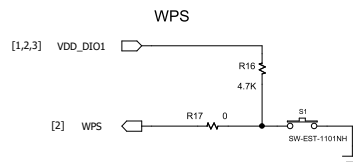
DA14531_UART2



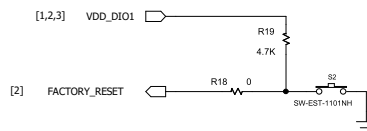
DA16200_UART0



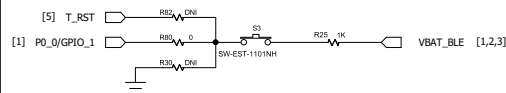
Factory Reset & WPS



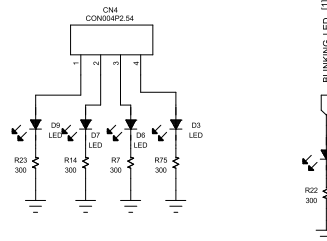
Factory Reset



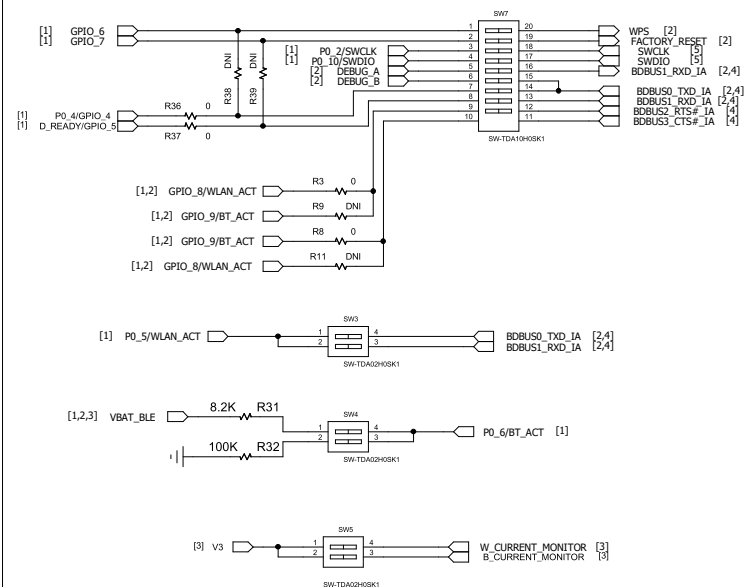
POR/RESET_BUTTON



FOR_USER_LED



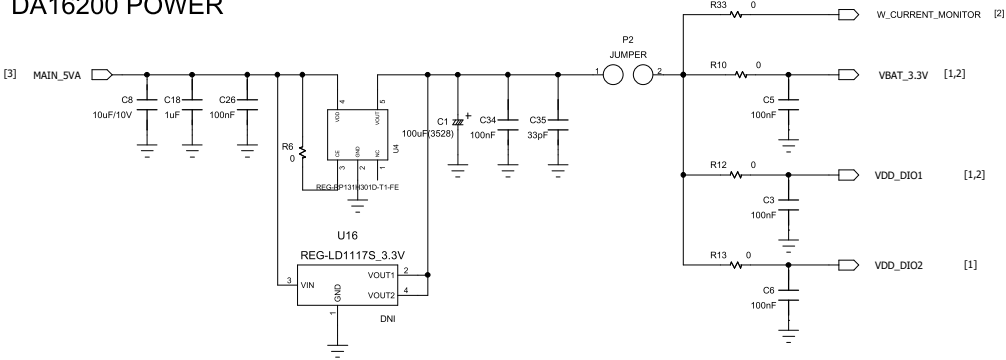
SWITCH



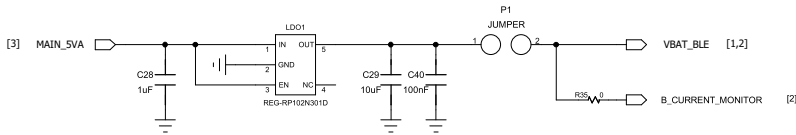
| | | | |
|------------------|--------------|--------|------------|
| DRAWN: | Seungho Shin | DATED: | 11/16/2020 |
| CHECKED: | Sungho Kim | DATED: | 11/16/2020 |
| QUALITY CONTROL: | | DATED: | |
| RELEASED: | Sungho Kim | DATED: | 11/16/2020 |

| REVISION RECORD | | | |
|-----------------|---------|-----------|-------|
| LTR | ECO NO: | APPROVED: | DATE: |
| | | | |
| | | | |
| | | | |
| | | | |

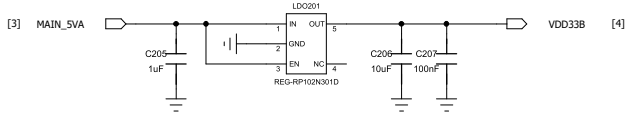
DA16200 POWER



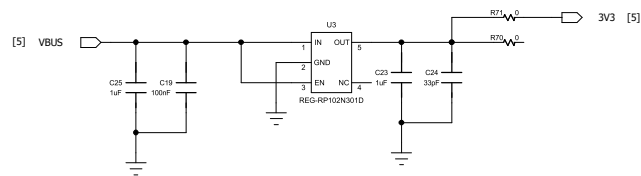
DA14531_POWER



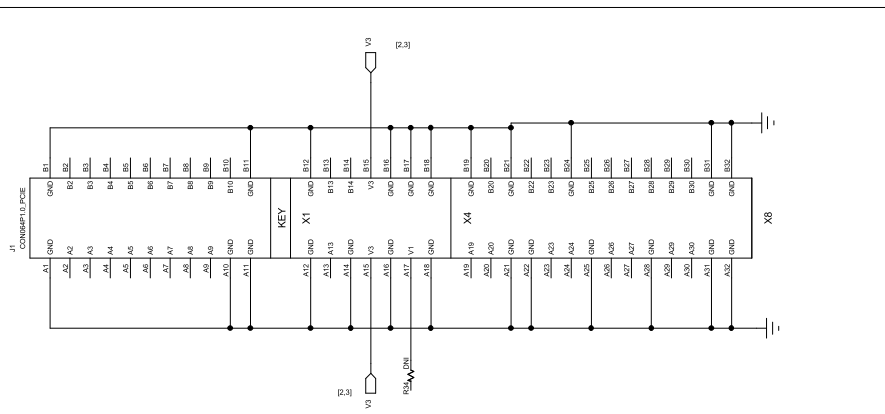
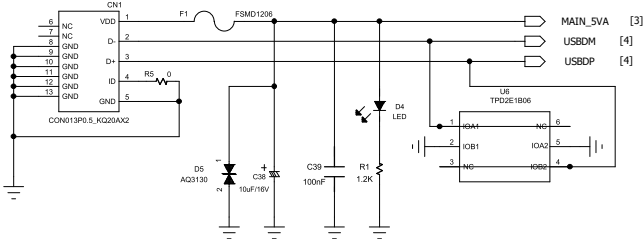
FT2232H & EEPROM POWER



ATMEL_POWER

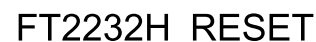


USB_CONNECTOR



| | | | |
|--------------------------------------|-------------------|----------------------------|-------|
| COMPANY: Renesas Design Korea Inc. | | | |
| TITLE: DA16600 Module Evaluation Kit | | | |
| DRAWN: Seungsho Shin | DATED: 11/16/2020 | CODE: | SIZE: |
| CHECKED: Sungho Kim | DATED: 11/16/2020 | DRAWING NO: DA16600MOD EVK | |
| QUALITY CONTROL: | DATED: | REV: 4v0 | |
| RELEASED: Sungho Kim | DATED: 11/16/2020 | SHEET: 3 OF 5 | |

USB INTERFACE



D

C

B

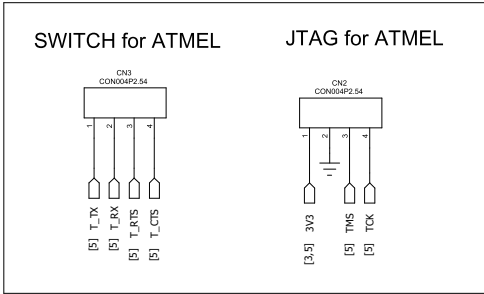
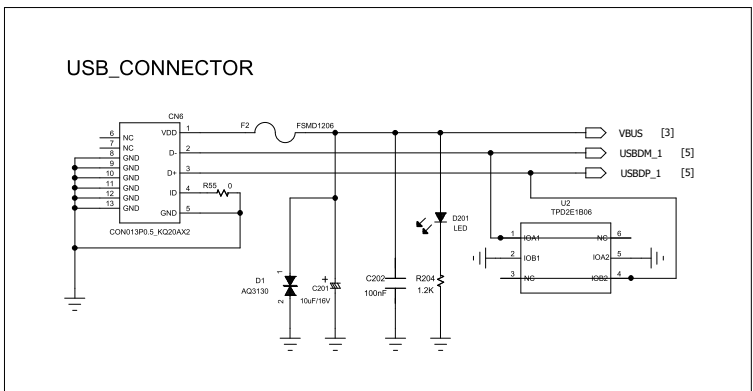
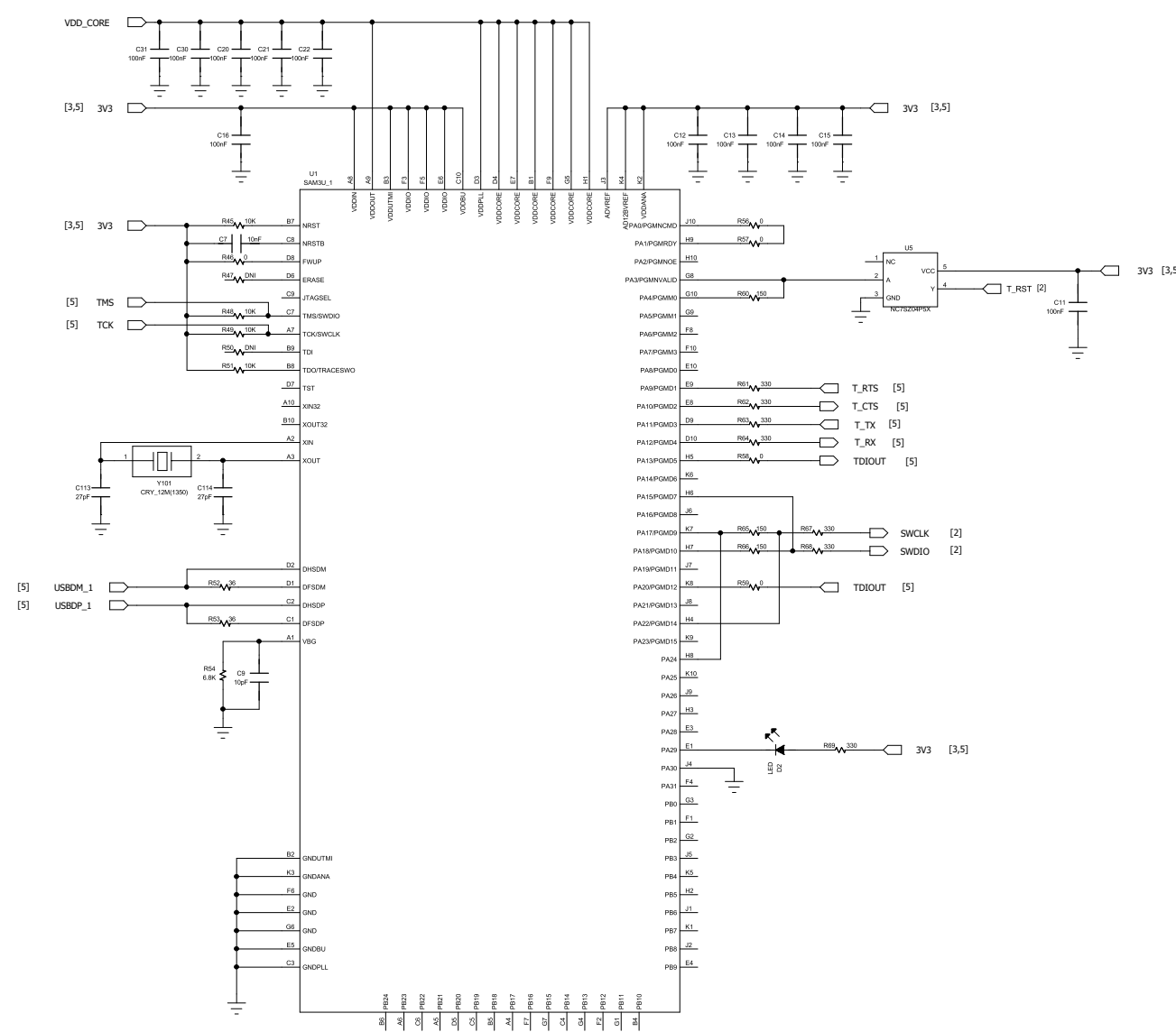
A

D

C

B

A



| | | | | | | | |
|-------------------------|--|---|--|----------------------|-------|-------------------------------|---------------|
| | | COMPANY: Renesas Design Korea Inc. | | | | | |
| | | TITLE: DA16600 Module Evaluation Kit | | | | | |
| | | DRAWN: Seunggho Shin | | DATED: 11/16/2020 | | | |
| | | CHECKED: Sungho Kim | | DATED: 11/16/2020 | | | |
| QUALITY CONTROL: | | DATED: | | CODE: | SIZE: | DRAWING NO: DA16600MOD EVK | REV: 4v0 |
| RELEASED: Sungho Kim | | DATED: 11/16/2020 | | SCALE: | | | SHEET: 5 OF 5 |