

[Notes]

R20TS1141EJ0100

Rev.1.00

Jun. 20, 2025

CS+ Integrated Development Environment

(Note of the dialog box for setting the CRC calculation result output option)

Outline

When using the CS+ integrated development environment, note the following points:

1. Note of the dialog box for setting the build tool's CRC calculation result output option

1. Note of the dialog box for setting the build tool's CRC calculation result output option

1.1 Applicable Products

CS+ for CC V8.10.00 and later

1.2 Applicable Devices

RX family MCUs

1.3 Details

When you change the initial value in the dialog box for setting the CRC calculation result output option, the changed value may not be reflected in the CRC calculation result output option. As a result, when you execute the Build, the previous value is specified for the initial value parameter of the CRC calculation result output option, and a calculation result different from the expected result is output to the output file.

1.4 Conditions

When the following procedure is performed in a project that uses CC-RX V3.05.00 or later version of the C/C++ Compiler Package for RX Family:

- 1) Click the [...] button in the [CRC operations] property ([Hex Output Options] tab > [Hex Format] category).
The [CRC Operations] dialog box appears.
- 2) In the [CRC Operations] dialog box, add an output address to the [Output address list], enter any values for [Target range] and [Type of CRC], and also set any value within the allowable range for [Initial value]. Then click the [OK] button.

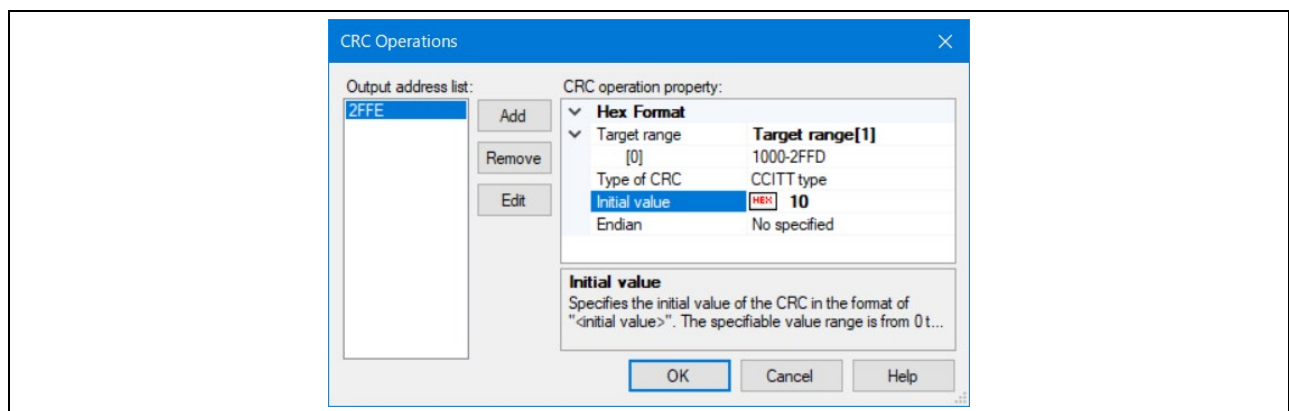


Figure 1 [CRC Operations] dialog box (Specify any value to [Initial value])

- 3) Display the [CRC Operations] dialog box again, change [Initial value] to a blank value, and click the [OK] button.
(If you execute the Build at this point, the initial value of the CRC calculation result output option will correctly be set to blank.)

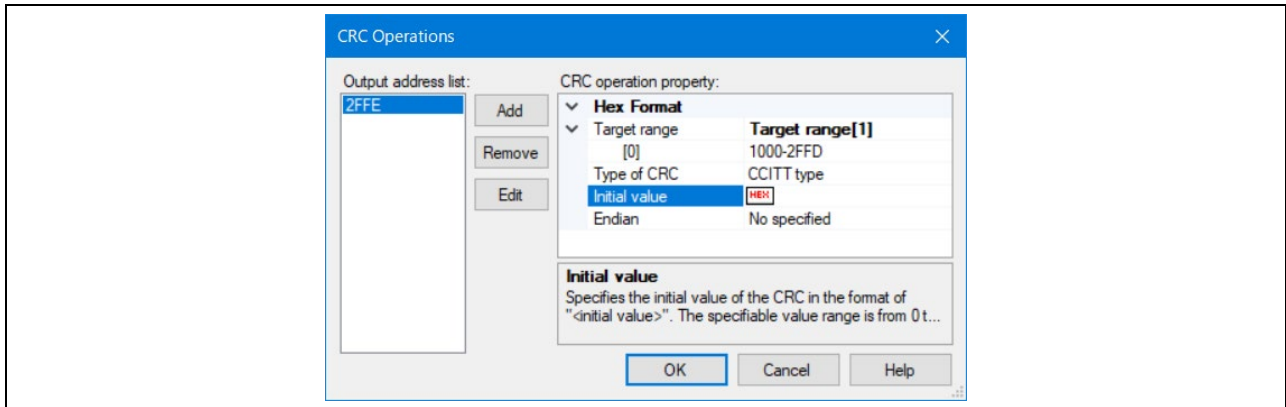


Figure 2 [CRC Operations] dialog box (Change [Initial value] to blank)

- 4) Perform either of the following steps.
 - a) Display the [CRC Operations] dialog box again.
 - b) Change the version of CC-RX to V3.04.00 or an earlier version.

After performing the above operation, [Initial value] of the [CRC calculation] property will not be changed to blank, and the value entered in step 2) will remain. As a result, when you execute the Build, the previous value will be specified as the initial value parameter of the CRC calculation result output option, and a calculation result different from the expected result will be output to the output file.

If you are not sure whether your project is affected by this issue, please open the "<project name>/<build mode name>/<project name>.clnk" file with an editor and check that the expected parameters are written in the -crc option.

1.5 Workaround

Do not specify a blank value for [Initial value]. Explicitly specify a value equivalent to blank (the same value as the interpretation when omitted).

Please refer to the compiler manual for the interpretation when the CRC calculation result output option parameter is omitted.

1.6 Schedule for Fixing the Problem

This problem will be fixed in the next version (scheduled for July 2025) of the CS+ integrated development environment.

Revision History

Rev.	Date	Description	
		Page	Summary
1.00	Jun.20.25	-	First edition issued

Renesas Electronics has used reasonable care in preparing the information included in this document, but Renesas Electronics does not warrant that such information is error free. Renesas Electronics assumes no liability whatsoever for any damages incurred by you resulting from errors in or omissions from the information included herein.

The past news contents have been based on information at the time of publication. Now changed or invalid information may be included.

The URLs in the Tool News also may be subject to change or become invalid without prior notice.

Corporate Headquarters

TOYOSU FORESIA, 3-2-24 Toyosu,
Koto-ku, Tokyo 135-0061, Japan
www.renesas.com

Trademarks

Renesas and the Renesas logo are trademarks of Renesas Electronics Corporation. All trademarks and registered trademarks are the property of their respective owners.

Contact information

For further information on a product, technology, the most up-to-date version of a document, or your nearest sales office, please visit:
www.renesas.com/contact/